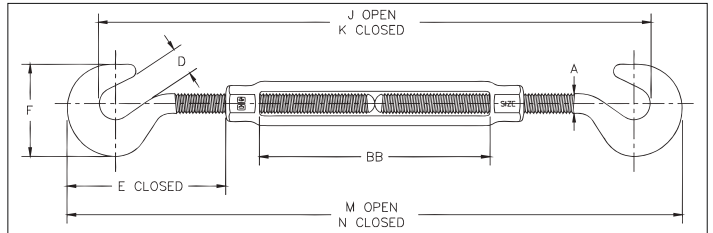




HG-223

- End fittings are Quenched & Tempered or normalized, bodies heat-treated by normalizing.
- Hot-dip galvanized steel.
- Hooks are forged with a greater cross sectional area that results in a stronger hook with better fatigue properties.
- TURNBUCKLES RECOMMENDED FOR STRAIGHT OR IN-LINE PULL ONLY.
- Modified UNJ thread on end fittings for improved fatigue properties.
- Body has UNC threads.
- Lock nuts available for all sizes.
- Fatigue rated to 20,000 cycles at 1-1/2 times the Working Load Limit.
- Meets or exceeds all requirements of ASME B30.26 including identification, ductility, design factor, proof load and temperature requirements. Importantly, these turnbuckles meet other critical performance requirements including fatigue life, impact properties and material traceability, not addressed by ASME B30.26.
- Meets the performance requirements of Federal Specifications FF-T-791b, Type 1 Form 1 - CLASS 5, and ASTM F-1145, except for those provisions required of the contractor. For additional information, see warnings and applications section.

QT Fatigue Rated



HG-223 Hook & Hook

Thread Dia. & Take Up (in)	Stock No.	Working Load Limit (lb)*	Weight Each (lb)	Dimensions (in)								
				A	D	E Closed	F	J Open	K Closed	M Open	N Closed	BB
1 x 12	1030333	5000	14.8	1.00	1.25	6.56	4.25	36.59	25.06	40.12	28.12	12.18

5:1 Design Factor. Proof Load is 2.5 times the Working Load Limit.

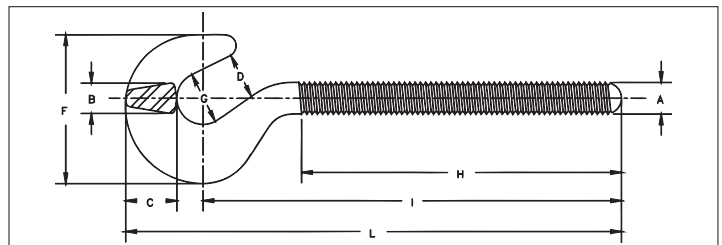
10



HG-4037

- Quenched & Tempered or normalized.
- Hot-dip galvanized steel.
- Hooks are forged with a greater cross sectional area that results in a stronger hook with better fatigue properties.
- Fatigue rated to 20,000 cycles at 1-1/2 times the Working Load Limit.

QT Fatigue Rated



HG-4037 Hook End Fittings

Shank Dia. & Take Up (in)	RH Hook Stock No.	LH Hook Stock No.	Working Load Limit (lb)	Weight Each (lb)	Dimensions (in)								
					A	B	C	D	F	G	H	I	L
1 x 12	1070334	1070851	5000	4.72	1.00	1.00	1.53	1.25	4.25	1.38	8.06	11.84	14.06